

The background of the entire page is a low-angle, upward-looking photograph of modern glass skyscrapers. The sky is a clear, bright blue. In the upper right, a curved architectural element, possibly a staircase or a part of a building's facade, is visible, featuring a series of parallel lines that create a sense of depth and movement. The logo is positioned in the upper left quadrant, with the company name in a large, bold, white font and the tagline in a smaller, white font below it.

**SKY CLIMBER®**  
ACCESS INNOVATIONS SINCE 1955

## ***SUSPENSION SYSTEMS***



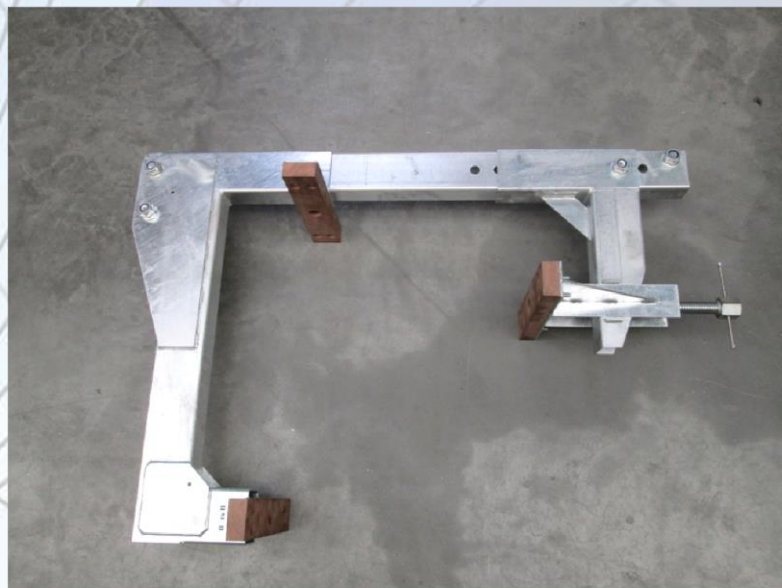
# SUSPENSION SYSTEMS

The **SKY CLIMBER®** “SUSPENSION SYSTEMS” are designed for use with any **SKY CLIMBER®** powered access platform. This system combination forms a complete suspended access system and is a cost-effective complement to the range of **SKY CLIMBER®** products. All systems are fabricated from hot dipped galvanized steel. To meet or exceed all safety requirements, the suspension systems are CE approved and accepted world wide.

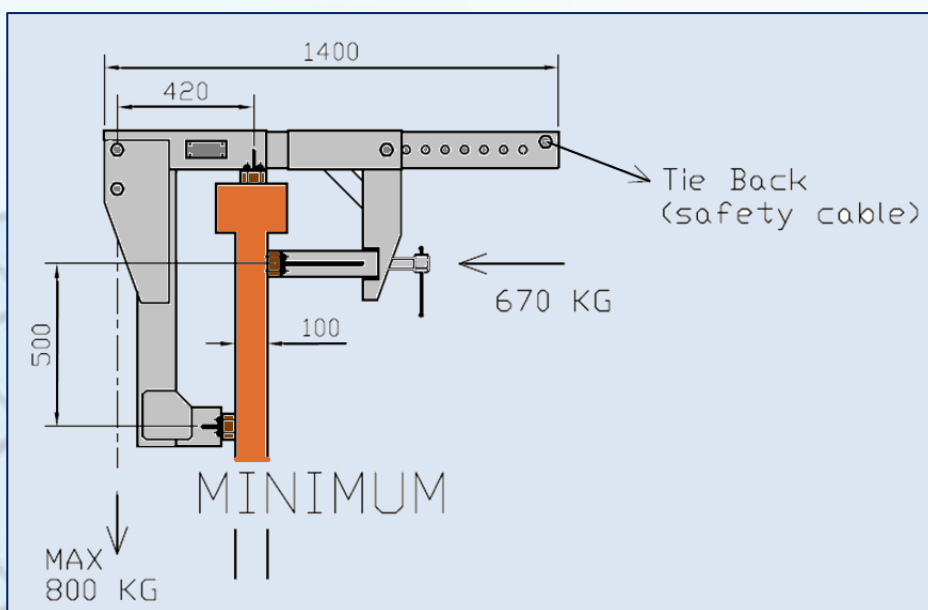


## ADJUSTABLE PARAPET CLAMPS

The **SKY CLIMBER®** parapet roof clamps are adjustable to fit most standard parapet walls. With a safe working load of 800 kg our adjustable parapet clamp offers a good alternative to roof beams or davit arms.



### TECHNICAL INFORMATION



Safe Working Load:	Max. 800 kg
Self-weight :	70 kg
Parapet width:	100 - 500 mm

Special attention should be given to the roof and parapet structure to ensure strength and integrity.  
Tie-backs should be used under all circumstances!



## LIGHT WEIGHT ROOF BEAM

Using a minimum number of component parts, the light weight roof beam is designed to solve standard rigging problems in combination with hoists with a maximum working load limit of 500 kg. Our light weight roof beam has a fixed length of 4000 mm. Our roof beam can be equipped with double brake castor wheels for easy maneuvering and safety. Steel counterweights of 22 kg have carrying handles and fit counterweight boxes with additional safety locks.



### TECHNICAL INFORMATION

Working Load Limit	Max. 500 kg
Overall Length:	4030 mm
Jib Length:	950 mm
Total Height:	1400 mm
Center distance between front and rear support	2960 mm
Parapet Height:	Max. 1250 mm
Self-weight:	130 kg
Counterweight:	22 kg/pcs (max. 22 pcs)
Working Load Limit:	300 kg / 16 counterweights 400 kg / 18 counterweights 500 kg / 22 counterweights

# TELESCOPIC ROOF BEAM TYPE III

Using a minimum number of component parts, the roof beam is designed to solve most standard rigging problems. Our telescopic roof beam can be adjusted in lengths from 4300 mm till 5700 mm with a maximum outreach of 1700 mm. Our roof beam can be equipped with double brake castor wheels for easy maneuvering and safety. Counterweights have integrated handgrips for easy carrying.

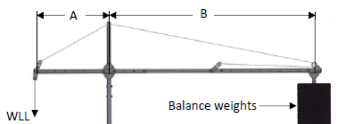




## TECHNICAL INFORMATION

Working Load Limit	Max. 800 kg
Overall Length:	5700 mm
Jib Length:	Max. 1700 mm with 500 kg Max. 1500 mm with 800 kg
Total Height:	2350 mm (incl. antenna)
Parapet Height:	Max. 1200 mm (if wheels)
Self-weight:	160 kg
Counterweight:	23 kg/pcs (max. 36 pcs)
Safe Working Load:	See Load Chart



Double brake castor wheels

										<div> N.V. Sky Climber Europe S.A. Nijverheidsstraat 23 B-2570 Duffel Belgium</div>										<div><div>Telescopic Roofbeam Type III NUMBERS of BALANCE WEIGHTS (23 Kg each) for roofbeam according to EN 1808  (PN 12009284 rev -)</div></div>									
Work Load Limit : WLL = 400Kg										Work Load Limit : WLL = 500Kg										Work Load Limit : WLL = 800Kg									
A (m) = Out Board direction	B (m) = Inboard direction								A (m)	B (m) = Inboard direction								A (m)	B (m) = Inboard direction										
	4,6	4,2	4	3,8	3,6	3,4	3,2	4,6		4,2	4	3,8	3,6	3,4	3,2	4,6	4,2		4	3,8	3,6	3,4	3,2						
	Numbers of Balance weights necessary for this length									Numbers of Balance weights necessary for this length									Numbers of Balance weights necessary for this length										
	1,1	12	12	14	14	14	16	16		1,1	14	16	16	18	18	20	22		1,1	24	26	28	30	30	32	34			
	1,3	-	-	16	16	16	18	18		20	1,3	-	-	20	20	22	22		24	26	1,3	-	-	32	32	34	36	-	-
1,5	-	-	18	18	20	20	22	24	1,5	-	-	22	24	24	26	28	30	1,5	-	-	36	-	-	-	-				
1,7	-	-	-	-	22	22	24	26	1,7	-	-	-	-	26	28	30	32	1,7	-	-	-	-	-	-	-				



Davit arms in combination with floor or parapet mounted sockets are the best alternative for roofs with limited space. The davits are rotatable at the top so that the platform can easily be parked onto the roof or balcony.



Floor mounted davits, rotatable at the top



Floor mounted socket



Rotatable davits with a 5 m mesh clad LWS PI

The *SKY CLIMBER*® SC-134 aluminum monorail profile is designed for easy mounting on every type of building or structure where a horizontal monorail solution is required. Because of the specially designed shape of the monorail extrusion, *SKY CLIMBER*® is able to produce monorail sections that are light weight but very strong.

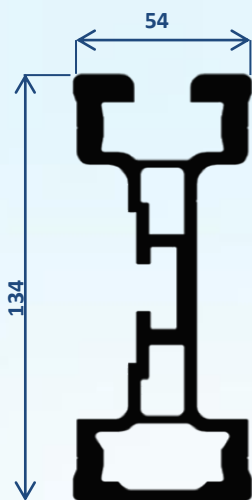
A wide range of bracket types insures a smooth monorail path at all times. Even unique architecture is no problem for the *SKY CLIMBER*® SC-134 monorail system.

In combination with single or double suspension trolleys and our SKY PI/BMU cradles, the *SKY CLIMBER*® monorail system will provide you a safe, permanent and cost effective solution for all your access or maintenance problems.





## Monorail Profile SC-134:



- Ref. nr. : 21000300
- Material: Anodized aluminum
- Weight: 5,981 kg/m
- Height: 134 mm
- Width: 54 mm
- Distance between brackets :  
2,5 meter (400 kg hoist) / 3  
meter (300 kg hoist)



S-shaped bend



90° corner sections



Customized bends



S-shaped and 90° corner sections

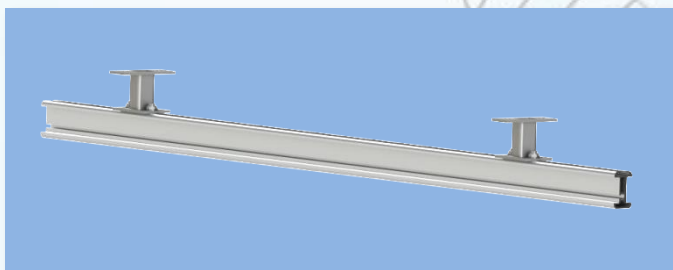


The SKY CLIMBER® SC-134 aluminum monorail profile is installed 550 mm away from the façade. SKY CLIMBER® has standardized concepts of brackets that can be easily adjusted to most buildings and situations. SKY CLIMBER® is also capable of offering tailor made solutions. Special brackets fitting the existing architecture can be developed.

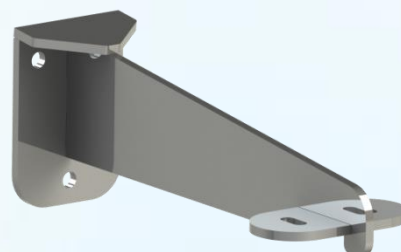
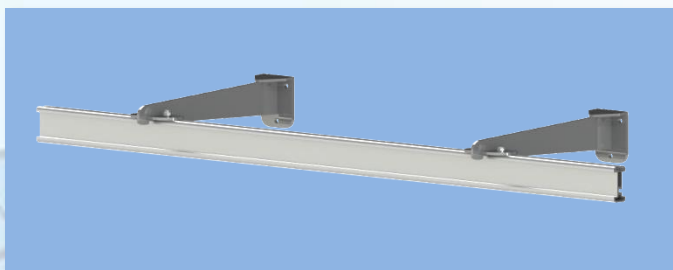
The maximum distance between brackets is 2.5 m when used in combination with 500 kg hoists. When using 300 kg hoists the maximum bracket distance is 3 m. Smaller distances between brackets are possible upon request.

All our brackets are manufactured out of hot dipped galvanized steel insuring they are weatherproof and strong. They are tested for strength and durability in our factory.

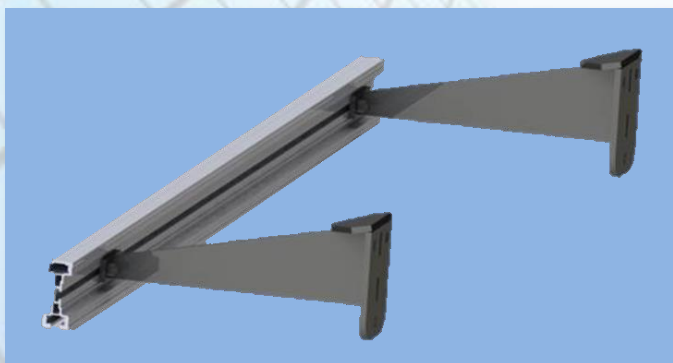
### Top Mounted Brackets



### Top Side Mounted Brackets



### Side Mounted brackets



More information about our monorail systems can be found in our monorail brochure.

## CUSTOM MADE SUSPENSION SOLUTIONS

**SKY CLIMBER®** is capable of designing and manufacturing all kinds of custom made suspension roof beams, parapet clamps, davit arms and other modular suspension solutions.



Mobile tank suspension on walkway



High mobile roof beam



## CUSTOM MADE SUSPENSION SOLUTIONS

Our adjustable suspension structure can be adapted in height and length to almost every circumstance and can be used on silo's, access pits, tanks or any other confined space where a special suspension structure is needed. An electric or pneumatic hoist can be mounted directly onto the structure.



**Count on SKY CLIMBER®...** backed by more than 55 years industry experience, known for many innovative, industry first achievements, leading a safe, fast and strong way into the future.



# **SKY CLIMBER®**

**ACCESS INNOVATIONS SINCE 1955**

N.V. SKY CLIMBER EUROPE S.A. - NIJVERHEIDSSTRAAT 23 - 2570 DUFFEL - BELGIUM  
E-mail: [info@skyclimber.be](mailto:info@skyclimber.be) - Web site: [http:// www.skyclimber.com](http://www.skyclimber.com)  
Tel: +32 (0)3 887 81 20 - Fax: +32 (0)3 887 09 94

Copyright ©2014, All Rights Reserved – N.V. Sky Climber Europe S.A.

